



Worcester Close

, Corby, NN18 8QZ

£165,000



Worcester Close

, Corby, NN18 8QZ

£165,000



Entrance Hall.

Staircase rising to the first floor;

Lounge

17'1" x 17'7" (5.23m x 5.38m)

Large open plan lounge diner with access through to the kitchen and double glazed window to the front elevation.

Kitchen

7'10" x 6'0" (2.39m x 1.83m)

Fully fitted modern kitchen accessed from the lounge and complimented by both eye level and base level units.

Bedroom one.

12'0" x 9'1" plus recess (3.66m x 2.79m plus recess)

Large double bedroom with double glazed window to the front elevation.

Bedroom two.

14'0" x 8'2" (4.27m x 2.49m)

Double bedroom with double glazed window to the front elevation.

Outside.

Front; Single garage to the front with a single parking space.



Road Map



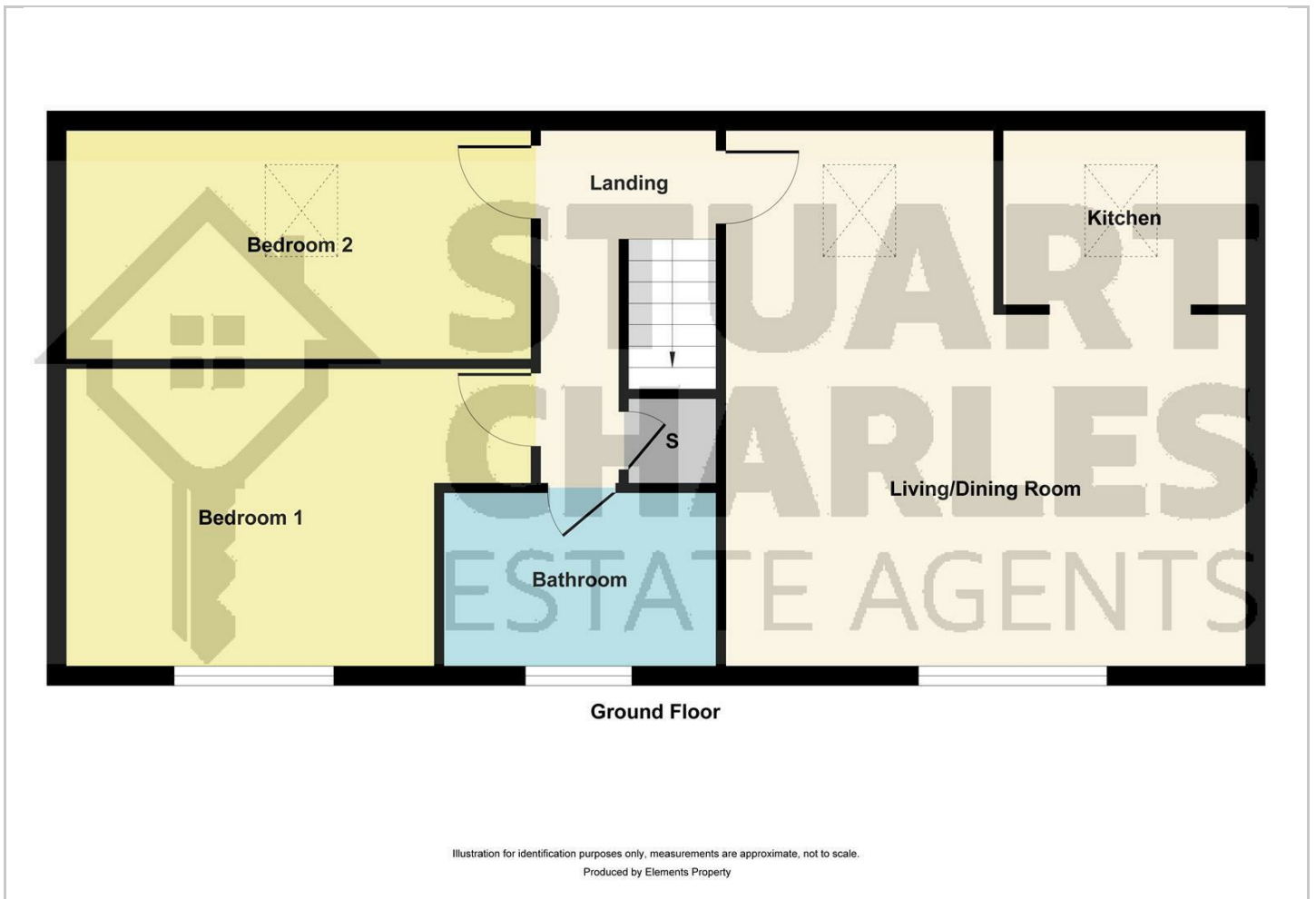
Hybrid Map



Terrain Map



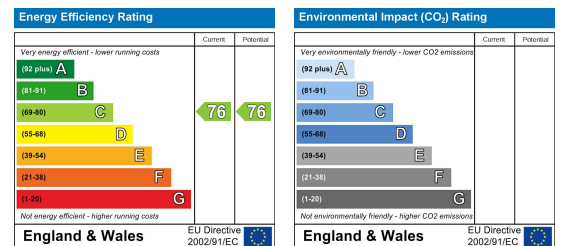
Floor Plan



Viewing

Please contact our Stuart Charles Estate Agents Office on 01536 234264 if you wish to arrange a viewing appointment for this property or require further information.

Energy Efficiency Graph



These particulars, whilst believed to be accurate are set out as a general outline only for guidance and do not constitute any part of an offer or contract. Intending purchasers should not rely on them as statements of representation of fact, but must satisfy themselves by inspection or otherwise as to their accuracy. No person in this firm's employment has the authority to make or give any representation or warranty in respect of the property.